

Type MSSP Single phase manual starters



Single phase manual starters Type MSSP



MSSP

Starting and overload protection of small 1Ø AC/DC motors used on the following:

- Unit heater stokers
- Refrigeration compressors
- Fans
- Pumps

MSSP manual switches consist of a snap switch combined with a thermal overload device operating on the solder-ratchet principle. The switch is designed to prevent being held closed under a sustained motor overload. To reset the overload mechanism, the switch lever is moved to the OFF position. The motor can be restarted by pushing the switch lever to the ON position. Applications include compressors, fans and pumps.

Standards compliance and certifications

- UL Listed — Enclosed Products (File No. E137861; Guide No. NLRV)
- UL – Open Style
- Products (File No. E137861; Guide No. NLRV2)
- CSA Certified LR 1234
- American Bureau of Shipping
- CE Marked (Per 60947)

Product Selection

Your order must include:

- Cat. No. of the switch
- Cat. No. of the heater element(s)
- If required, Cat. No. of any accessories.

Single phase manual starters Type MSSP



MSSP1-T2P



MSSP-T2P



MSSP-PL



MSSP-LA

Ratings

Single pole — 1 HP 115...230V AC, 1 HP 277V AC, Open Type without Enclosure or Type 1 General Purpose Enclosure

Two pole — 1 Hp 115...230V AC, 1 HP 277 AC, Open Type without enclosure or Type 1 General Purpose Enclosure, 3/4 HP 115...230V DC

Description	Open type without enclosure - includes legend plate	Type 1 General purpose enclosure - surface mount	Type 1 General purpose enclosure - flush mounting includes flush plate but not switch box
	Catalog number	Catalog number	Catalog number

Switch only

Toggle type	1 pole	MSSP-T1	MSSP1-T1	MSSP-T1S
	2 pole	MSSP-T2	MSSP1-T2	MSSP-T2S
Key type	2 pole	MSSP-K2	MSSP1-K2	MSSP-K2S
Lever type	1 pole	MSSP-L1	MSSP1-L1	—

Switch with neon pilot light (115 or 230V)

Toggle type	1 pole	MSSP-T1P	MSSP1-T1P	MSSP-T1PS
	2 pole	MSSP-T2P	MSSP1-T2P	MSSP-T2PS
Key type	2 pole	MSSP-K2P	MSSP1-K2P	MSSP-K2PS

Switch and "hand-off-auto" selector switch (for use on AC only)

Toggle type	2 pole	—	MSSP1-T2H	MSSP-T2SH
-------------	--------	---	-----------	-----------

Switch with neon pilot light and "hand-off-auto" selector switch (115 or 230V AC only)

Toggle type	2 pole	—	MSSP1-T2HP	MSSP-T2SHP
Key type	2 pole	—	MSSP1-K2HP	—

Two switch units in one enclosure

Toggle type	2 pole	—	MSSP1-T2T2	—
-------------	--------	---	------------	---

Two switch units in one enclosure neon pilot light on both units (115 or 230V)

Toggle type	2 pole	—	MSSP1-T2PT2P	MSSP-T2PT2P
-------------	--------	---	--------------	-------------

Two speed switch

Toggle type	2 pole	—	MSSP1-22	—
-------------	--------	---	----------	---

Two speed switch with neon pilot lights (115 or 230V)

Toggle type	2 pole	—	MSSP1-22P	MSSP-22P
-------------	--------	---	-----------	----------

Accessories

Description	Catalog number
Pilot light replacement bulb incandescent Note: Pilot lights as used on MSSP switches indicate whether the motor is running only if the switch is used to control the motor directly. If a thermostat, pressure switch, or some other pilot device controls the operation of the motor, the light on the MSSP switch merely indicates whether the power is ON or OFF	MSSP-PL
Locking attachment (for toggle operated only)	MSSP-LA

Single phase manual starters Type MSSP

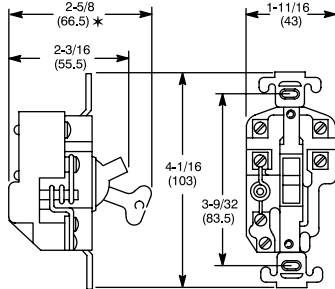
Starters
Single phase
Manual starters

Full load amperes	Catalog number
0.17	MSSP-P1
0.21	MSSP-P2
0.25	MSSP-P3
0.32	MSSP-P4
0.39	MSSP-P5
0.46	MSSP-P6
0.57	MSSP-P7
0.71	MSSP-P8
0.79	MSSP-P9
0.87	MSSP-P10
0.98	MSSP-P11
1.08	MSSP-P12
1.19	MSSP-P13
1.30	MSSP-P14
1.43	MSSP-P15
1.58	MSSP-P16
1.75	MSSP-P17
1.88	MSSP-P18
2.13	MSSP-P19
2.40	MSSP-P20
2.58	MSSP-P21
2.92	MSSP-P22
3.09	MSSP-P23
3.32	MSSP-P24
3.37	MSSP-P25
4.16	MSSP-P26
4.51	MSSP-P27
4.93	MSSP-P28
5.43	MSSP-P29
6.03	MSSP-P30
6.83	MSSP-P31
7.72	MSSP-P32
8.24	MSSP-P33
8.90	MSSP-P34
9.60	MSSP-P35
10.8	MSSP-P36
12.0	MSSP-P37
13.5	MSSP-P38
15.2	MSSP-P39

Approximate dimensions

Dimensions are shown in inches (millimeters). Dimensions are not intended to be used for manufacturing purposes.

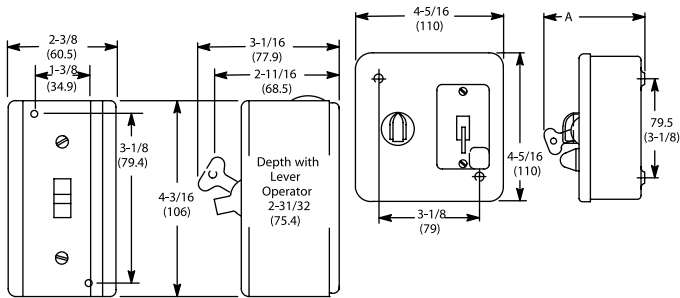
Open type without enclosure



Catalog number

MSSP-T1	MSSP-T2P	MSSP-T1
MSSP-T2	MSSP-K2P	
MSSP-K2	MSSP-L2	

Type 1 general purpose enclosure surface mounting



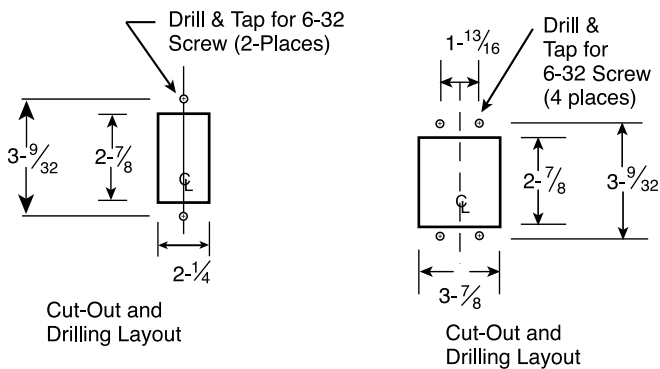
Catalog number

MSSP-T1	MSSP-T2P	MSSP-T1P
MSSP-T2	MSSP-K2P	MSSP1-K2HP
MSSP-K2	MSSP-L1	
MSSP1-T2H	MSSP1-T2HP	
MSSP1-T2T2	MSSP1-T2PT2P	

Dimension A (inches / millimeters)

Key inserted	1-1/8 (79.5)
Selector switch	2-3/4 (70)
Toggle operator	2-9/16 (65)

Type 1 general purpose enclosure flush mounting



Catalog number

MSSP-T1S	MSSP-T2PS
MSSP-T2	MSSP-K2PS
MSSP-K2S	MSSP-T1PS
MSSP-T2SH	MSSP-T2PT2P
MSSP-T2SHP	

